

Company Profile

Veolia Water Technologies ITALIA

Veolia Group

Key Figures



Veolia Group / *More than 160 years of industrial history*



Veolia designs solutions and delivers services related

- **Water**
- **Materials**
(with a focus on waste recovery)
- **Energy**

Around the globe, Veolia helps cities and industries to manage, optimize and make the most of their resources promoting the transition toward a circular economy.

Discover more <http://veolia.com/>

Veolia Group / *More than 160 years of industrial history*



WATER



WASTE



ENERGY



VEOLIA DESIGNS AND DEPLOYS CIRCULAR ECONOMY SOLUTIONS FOR **WATER**, **WASTE** AND **ENERGY** MANAGEMENT TO IMPROVE EFFICIENCY FOR CITIES, INDUSTRY AND CITIZENS.

€ 25.12
billion revenue

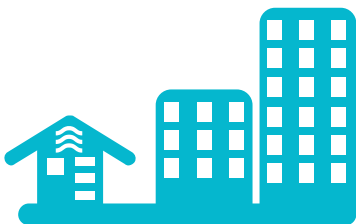
169,000
employees on 5 continents

2017 figures



WATER

Management of the global water cycle, from production and distribution of drinking water to the collection, treatment and recycling of wastewater.



WASTE

Liquid and solid non-hazardous and hazardous waste management

Our expertise covers the entire waste life cycle from collection to recycling, leading to the final recovery of waste as materials or energy.



ENERGY

Energy efficiency, efficient management of heating and cooling systems, green energy production, all unique expertise for a sustainable world.





SUSTAINABLE DEVELOPMENT AND CUSTOMERS COMPETITIVENESS



WATER

Management of the global water cycle, from production and distribution of drinking water to the collection, treatment and recycling of wastewater.



WASTE

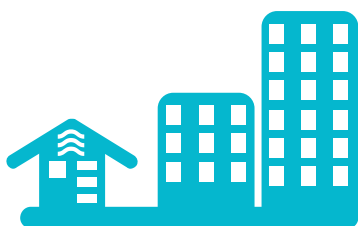
Liquid and solid non-hazardous and hazardous waste management

Our expertise covers the entire waste life cycle from collection to recycling, leading to the final recovery of waste as materials or energy.



ENERGY

Energy efficiency, efficient management of heating and cooling systems, green energy production, all unique expertise for a sustainable world.



WATER

Management of the global water cycle, from production and distribution of drinking water to the collection, treatment and recycling of wastewater.



WASTE

Liquid and solid non-hazardous and hazardous waste management

Our expertise covers the entire waste life cycle from collection to recycling, leading to the final recovery of waste as materials or energy.



ENERGY

Energy efficiency, efficient management of heating and cooling systems, green energy production, all unique expertise for a sustainable world.



WASTE

Liquid and solid non-hazardous and hazardous waste management

Our expertise covers the entire waste life cycle from collection to recycling, leading to the final recovery of waste as materials or energy.



40

million people provided with collection services on behalf of municipalities



47

million metric tons of waste treated



737,977

business customers



579

waste-processing facilities operated

Veolia Group / *Energy activities*



ENERGY

Energy efficiency, efficient management of heating and cooling systems, green energy production, all unique expertise for a sustainable world.



45

million MWh produced



40,210

thermal installations managed



595

heating and cooling networks managed



2,291

Industrial sites managed

Veolia Group / *Water activities*



WATER

Management of the global water cycle, from production and distribution of drinking water to the collection, treatment and recycling of wastewater.



2,878

wastewater treatment plants managed



4,117

water production plants managed



62

million people connected to wastewater systems



96

million people supplied with water

Veolia Water Technologies Italia



WASTE



WATER



ENERGY

Water
Technologies

Veolia Water Technologies Italia

is the Italian branch of Veolia Water Technologies

the World leader in water treatment

www.veoliawatertechnologies.com/en

Veolia Water Technologies Italia / *Divisions*



Veolia Italia operates through 2 operating divisions

The Solutions division develops technological standard solutions for water and wastewater treatment: EVALED®, IDRAFLOT®, IDRASCREEN®, MBBR Pack®.

A Service department offers a comprehensive after-sales service including consulting, maintenance, analysis, water treatment chemicals, and temporary mobile units.

The Industrial Design & Build division develops tailor-made solutions for water and wastewater treatment, odor control and production of biogas from biomass.

Expert and qualified internal **Laboratory** and **Process Department** give support to the Divisions.

Solutions Division / *EVALED®* Head Quarter



Solutions Division

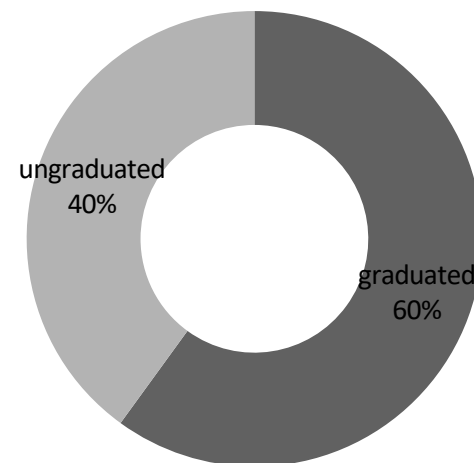
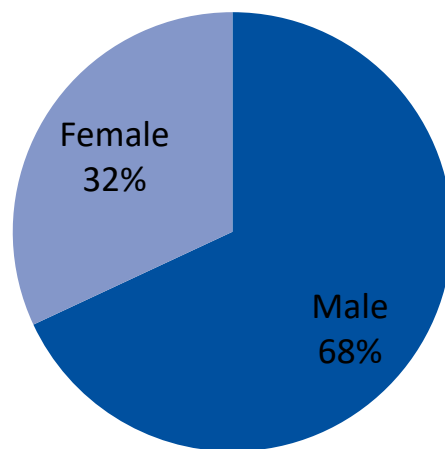
Via Pra' di Risi, 3
33080 Zoppola (PN) – ITALY



EVALED® Head Quarter / *Key Figures*

76

employees

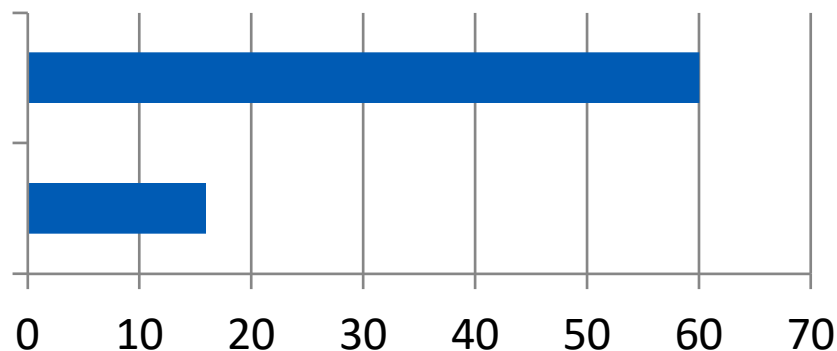


42

average age

Office employees

Workers



Experience / *Worldwide presence*

40

years of experience



**more than
3000**

references worldwide



1978

year of foundation



8

service centres



Technological offer



EVALED® / *Evaporation Technologies*



**3 families of evaporators
using low energy
consumption technologies**

EVALED® PC
Heat Pump

EVALED® AC
Hot/Cold water

EVALED® RV
*Mechanical Vapor
Recompression (MVR)*

IDRAFLOT® / DAF units



Compact dissolved air flotation units

- *Innovative and effective water mixing device*
- *Removal of insoluble COD, suspended solids and FOG*
- *Reduction of chemical additive dosing*
- *Capacities from 5 to 480 m³/h (22 – 2113 gpm)*

IDRASCREEN® / *Fine screening units*



High capacity compact screening units

- *Pre-treatment of wastewater*
- *Self-cleaning*
- *Low maintenance
and operating costs*

MBBR Pack[®] / *Moving Bed Biofilm Reactor*



Modular and compact plug & play MBBR solution

- *High treatment capacity
in a very small footprint*
- *3 configurations*
 - **ANAN** Anoxic
 - **AEAE** Aerobic
 - **ANAE** Anoxic – Aerobic
- *Built-in easy of expansion*
 - *Modular units*
 - *Easy carrier addition*

Green Technologies



CO₂ footprint challenge



Our carbon footprint reduction program drives innovation

Resource efficiency and sustainability are driving changes in many businesses.

We actively pursue a strategy to deliver environmentally conscious and innovative water treatment solutions, meeting the diverse Clients' needs.

Discover more on
<http://www.evaled.com/co2-footprint/>

Water Impact Index



Providing opportunities for ZLD, water reuse and recycling.

Developed by Veolia Water, the Water Impact Index expands on existing volume-based water measurement tools by factoring in three essential elements: quantity of water used, level of stress upon water resources and overall water quality.

Discover more on
<http://www.evaled.com/water-impact-index/>

Service solution



Service solution / Activities



Our after-sale service

Our Service department offers the opportunity to arrange a customized after sales pack for specific requirements of water treatment plants.

- *Recommended spare parts and consumable*
- *Routine maintenance*
- *Planned and preventative maintenance*
- *Emergency intervention management*
- *Management of turnkey units*
- *Maintenance contracts*
- *Remote plant control*
- *Training sessions for Client's personnel*
- *Chemical analysis and analytical research*

Discover more

<http://www.evald.com/activities/>

Service solution / *Rental Units*



Mobile Water Services Rental Units for Wastewater Treatment

A program that provides solutions and services for emergency and planned hires and longterm contracts.

- Emergency response
- Planned response
- Preventive maintenance contract

Discover more
<http://www.evaled.com/rental-units/>

Service solution / *EVA Life & IDRA Life - Service Packs*



Full service

The opportunity to choose a full and complete package including any after sales activity.

Customized Full Service

The opportunity to choose an after sales package with activities that meet any requirement from the Client: maintenance, spare parts, chemical analysis.

- **Time / Guarantee Extension**
- **Parts / Spare parts in stock**
- **Lab / Lab Analysis**
- **Clean / Automatic Washing System**
(only for EVALED®)
- **Link / Remote Control**
- **Maintenance / Service Pack**
- **Heart / EVALED® blower maintenance**
- **Maintenance**
- **Top / Full Service Pack**

Discover more

<http://www.evaled.com/service-packs/>

Contacts

**Get in touch with our
specialists and consultants**

T +39 0434 516311

F +39 0434 516310

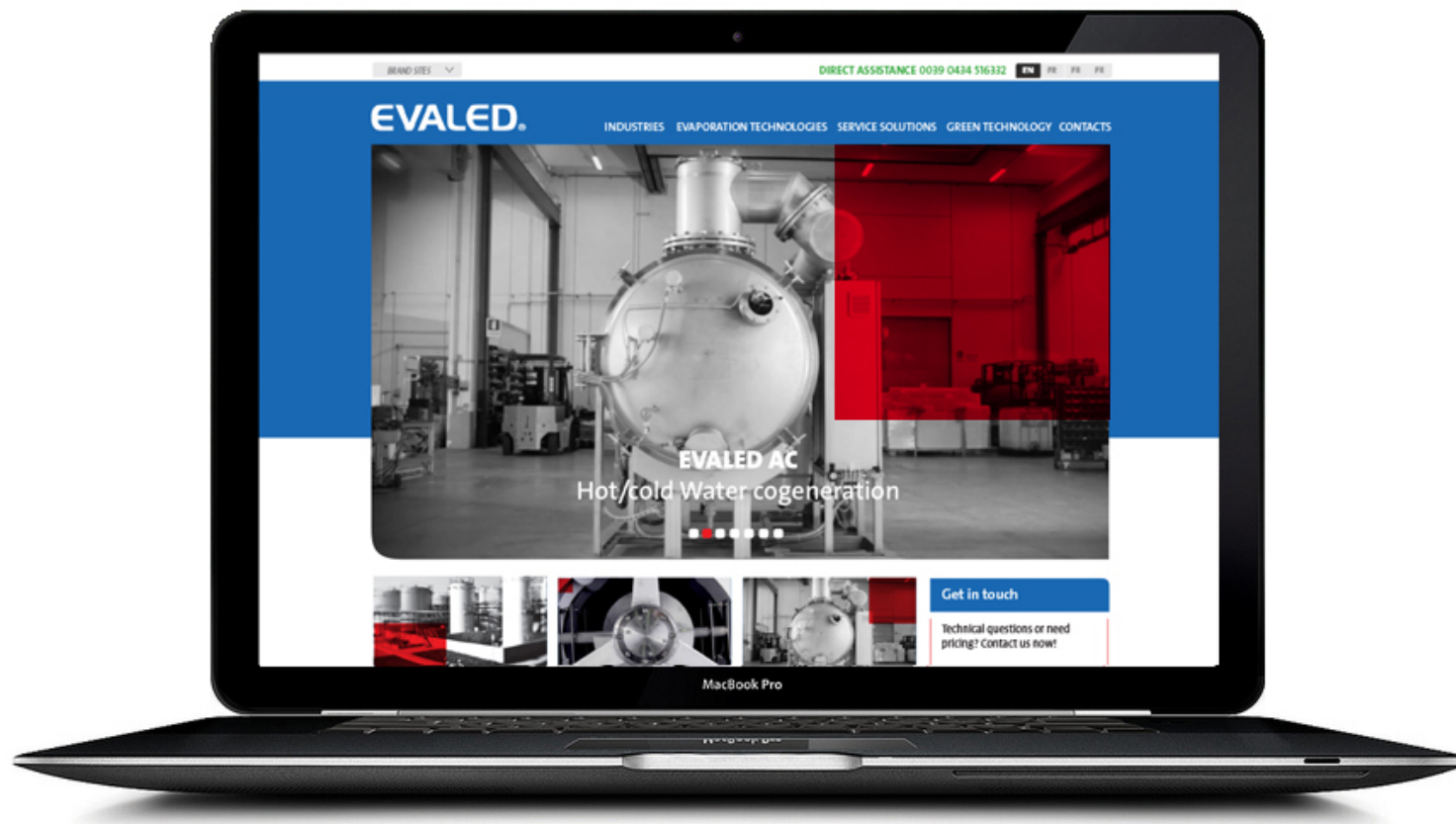
info@evaled.com

info@idraflot.com

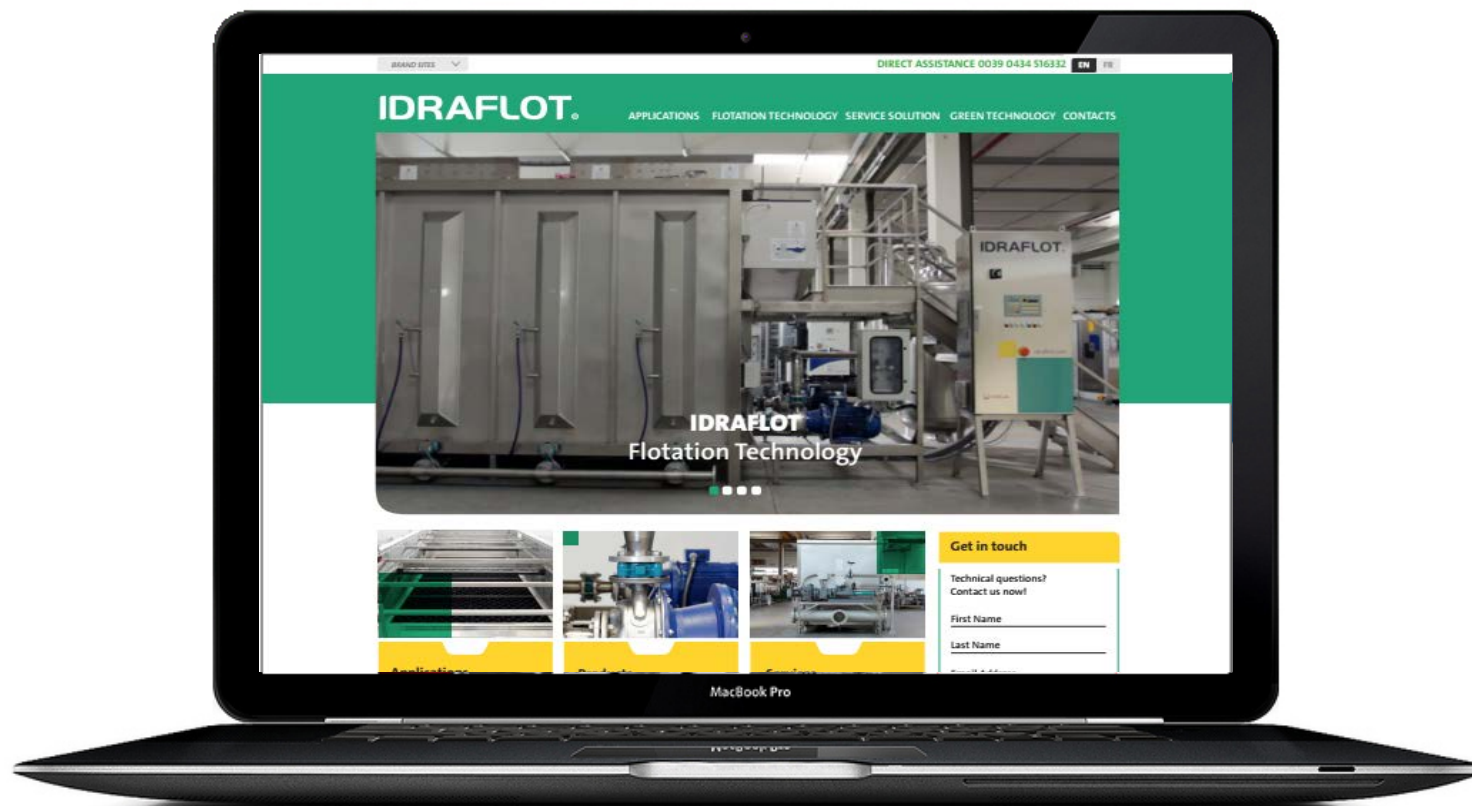
Veolia Water Technologies Italia
Solutions Division

Via Pra' di Risi, 3
33080 Zoppola (PN)
ITALY

Visit EVALED® / www.evaled.com



Visit IDRAFLOT® / www.idraflot.com



Thank you!